


Edit User Hoops

There may be times when you need to digitize for an embroidery machine that has a different size hoop than those listed in the Hoop Size menu. PE-DEISGN[®] NEXT will now allow you to create a hoop to fit your needs. This is particularly helpful when using a PR Fast Frame system.

1. **Open Layout and Editing.** When the Wizard appears, click **New** or **Cancel**. *If you are in an open session of Layout and Editing, click New Page  on the Quick Access toolbar.*

2. Click on the **Home Tab** .

3. Click on the **Design Settings tool** .

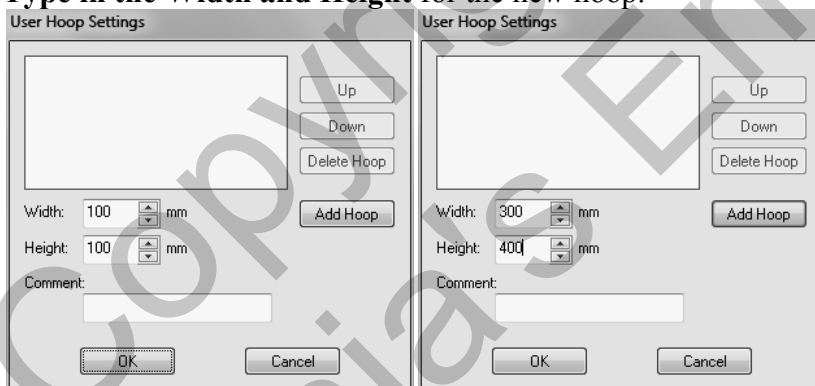
4. Click the **Machine type** to add the hoop into the menu.

Machine Type:

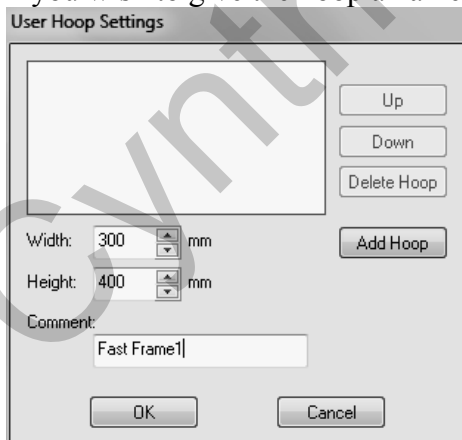


5. Click **Edit User Hoops** .

6. **Type in the Width and Height** for the new hoop.



7. If you wish to give the hoop a name, **type it in the Comment box.**



8. Click **Add Hoop** 

9. Click **OK** 

10. The hoop will be listed at the bottom of the hoop menu under the line and is selected in the same manner as other hoops.

